



## → Powerful Nanotechnology driving mineral nutrition in chicken

NanoTrace™ is a proprietary formulation containing all essential minerals in highly bioavailable zerovalent nanoparticle form (<100 nm particle size).

### Key ingredients

Zerovalent nanoparticles of zinc, copper, manganese, selenium, iron, iodine, and chromium

### Why is NanoTrace™ unique in its class ?

Invati and nanotechnology are inseparable. We have developed proprietary nanoparticle synthesis technology. NanoTrace™ is the result of such technology where all essential trace minerals for chicken are nano-scaled for higher bioavailability and biological activity. The particle size of trace minerals achieved, as detected by dynamic light scattering (DLS), is in the range 10 – 100 nm.

### Key features

- ⇒ Zinc, copper, manganese, selenium, iron, iodine, and chromium in nano-form < 100 nm.
- ⇒ Near zero  $\zeta$ -potential<sup>1</sup> (both positive-cum-negative  $\zeta$ ) of nanoparticles maximising cellular uptake and eliminating probability of unwanted interactions.
- ⇒ Dramatic increase in surface area (2000 – 3000X) of nano-scaled minerals ensure significant increase in biological activity as compared to the native forms.

### Inclusion level

500 – 800 g per MT feed or as recommended by nutritionist

### Presentation

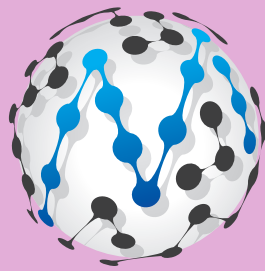
25 Kg

<sup>1</sup>Zeta potential

< 100 nm  
Diameter of  
Selenium NPs

Upto 3X  
Higher bioavailability  
than competition

Upto 10X  
Higher biological  
activity than native  
form



**invati**

---

**Improving lives through invention and innovation**

---

© 2021 Invati. All rights reserved. NanoTrace™ and the Invati logo are trademarks of Invati Creations Pvt Ltd.